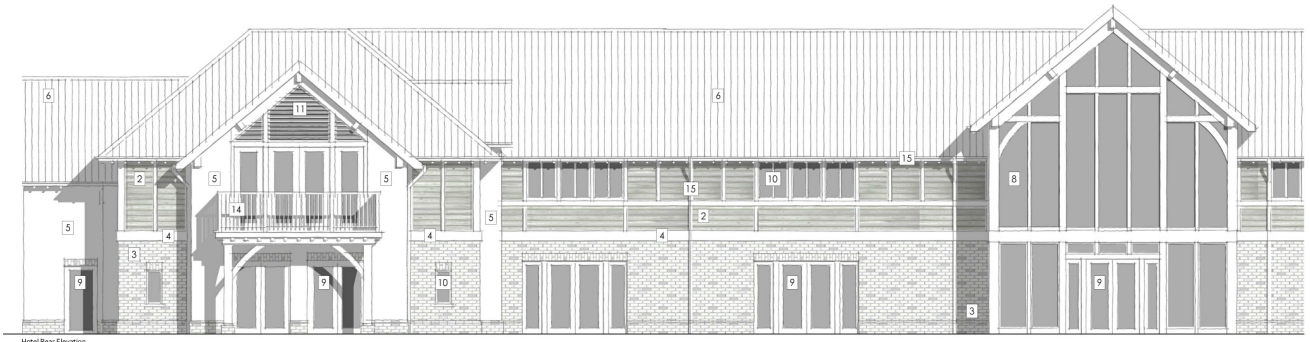


© Wildblood Macdonald Architects. All rights reserved. No part of this document may be reproduced, stored in a retrieval system, or transmitted in any form or by any means, electronic, mechanical, photocopying, recording, or by any information storage and retrieval system, without the prior written permission of Wildblood Macdonald Architects.



Hotel Rear Elevation



Staff Building Rear Elevation



Staff Building Court Yard Elevation

Materials Key:

1. Vertical Boarded Timber Cladding To Match Existing
2. Horizontal Timber Cladding In Timber Frame
3. Facing Brick With Brick Flinth To Match Existing
4. Intermediate Timber Cl
5. Render
6. Plain Tile Roof To Match Existing
7. Pantile Roof To Match Existing
8. Oak Framed Structure With Fixed Glazed Hill Panels
9. Timber Framed Glazed Doors
10. Timber Framed Double Glazed Casement Windows
11. Horizontal Timber Solar Shading To Windows
12. Rooflights
13. Single Pitch Roof
14. Oak Framed Balcony & Balustrading
15. Black UPVC Rainwater Goods To Match Existing

wildblood macdonald
 Parkhill Studio, Parkhill, Midlothian Road
 Edinburgh, LE12 3JZ
 T: 0131 222 5555
 www.wildblood-macdonald.com

DATE: 03/04/2018

THIS COPY HAS BEEN MADE BY OR WITH THE AUTHORITY OF WILDBLOOD MACDONALD ARCHITECTS. ANY REPRODUCTION OF THIS COPY WITHOUT THE WRITTEN PERMISSION OF WILDBLOOD MACDONALD ARCHITECTS IS STRICTLY PROHIBITED TO SECTION 17 OF THE COPYRIGHT, DESIGN AND PATENTS ACT 1988, UNLESS THAT ACT PROVIDES A RELEVANT EXCEPTION TO COPYRIGHT. THE COPY MUST NOT BE COPIED WITHOUT THE PRIOR PERMISSION OF THE COPYRIGHT OWNER.

Project	Client	Phase	Drawn By	Checked By	Date
Sandburn York Ltd.	Proposed Materials	24.61	PLJ	US	03/04/18
New Hotel & Staff Accommodation					
Sandburn Hall					
Fife					